

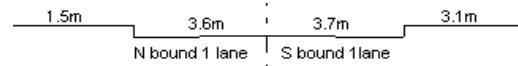
YEAR 2018

CORE STATION 5102

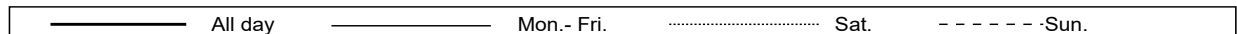
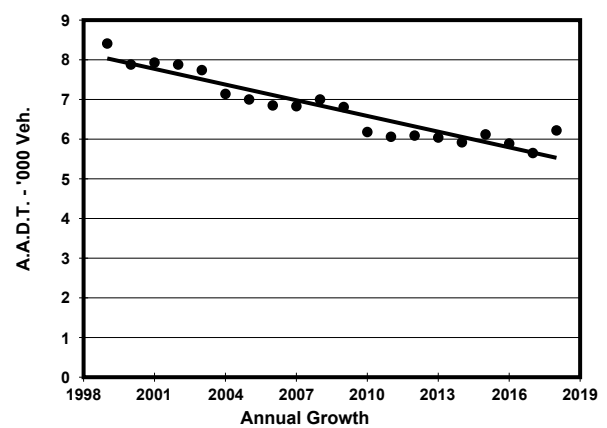
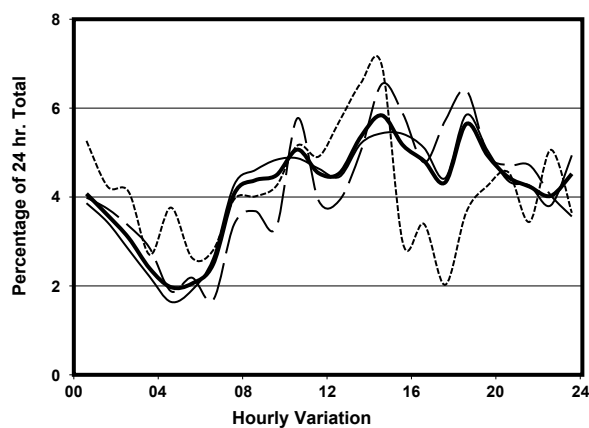
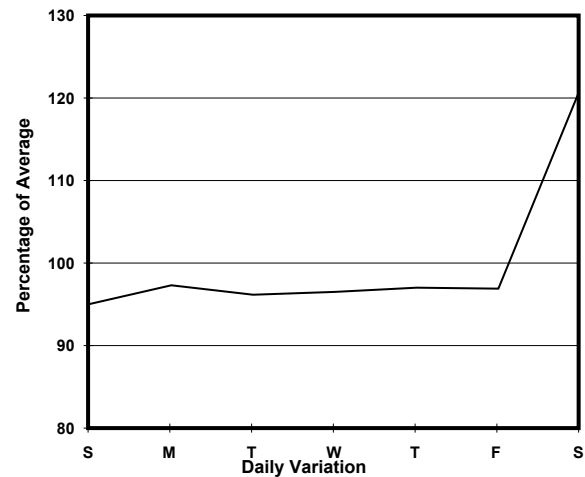
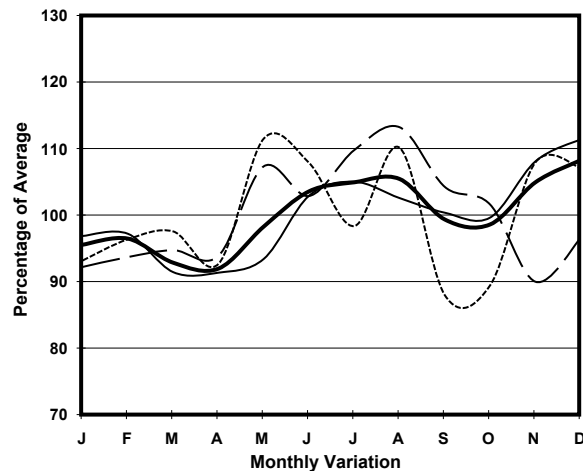
ROAD NETWORK MINOR

ROAD TYPE LOCAL DISTRIBUTOR

LINK TSENG CHOI ST (from CASTLE PEAK RD NORTHERN JUNCTION to CASTLE PEAK RD SOUTHERN JUNCTION)



1. TRAFFIC FLOW VARIATION AND GROWTH



2. TRAFFIC CHARACTERISTICS (BY DIRECTION)

Parameter	All - Day	Mon. - Fri.	Sat.	Sun.
SOUTH BOUND				
A.A.D.T.	3900	3790	4920	3530
R 12 / 24 - %	57.8	58.9	57.2	52.5
R 16 / 24 - %	75.5	76.7	75.7	68.5
AM Peak Hour	0700-0800	0700-0800	0700-0800	0900-1000
One-way flow at AM peak hour	180	190	190	160
T - % (AM)	-	-	-	-
PM Peak Hour	1800-1900	1800-1900	1800-1900	1800-1900
One-way flow at PM peak hour	240	230	340	150
T - % (PM)	-	-	-	-
Prop.of commercial vehicles - 16 hr.	-	-	-	-
NORTH BOUND				
A.A.D.T.	2320	2250	2650	2360
R 12 / 24 - %	59	59.6	60.5	55.1
R 16 / 24 - %	76.5	76.4	78.9	74.5
AM Peak Hour	0900-1000	0900-1000	0800-0900	0800-0900
One-way flow at AM peak hour	120	130	130	110
T - % (AM)	-	-	-	-
PM Peak Hour	1600-1700	1800-1900	1700-1800	1600-1700
One-way flow at PM peak hour	120	120	160	150
T - % (PM)	-	-	-	-
Prop.of commercial vehicles - 16 hr.	-	-	-	-

3. OTHER INFORMATION AND COMMENT